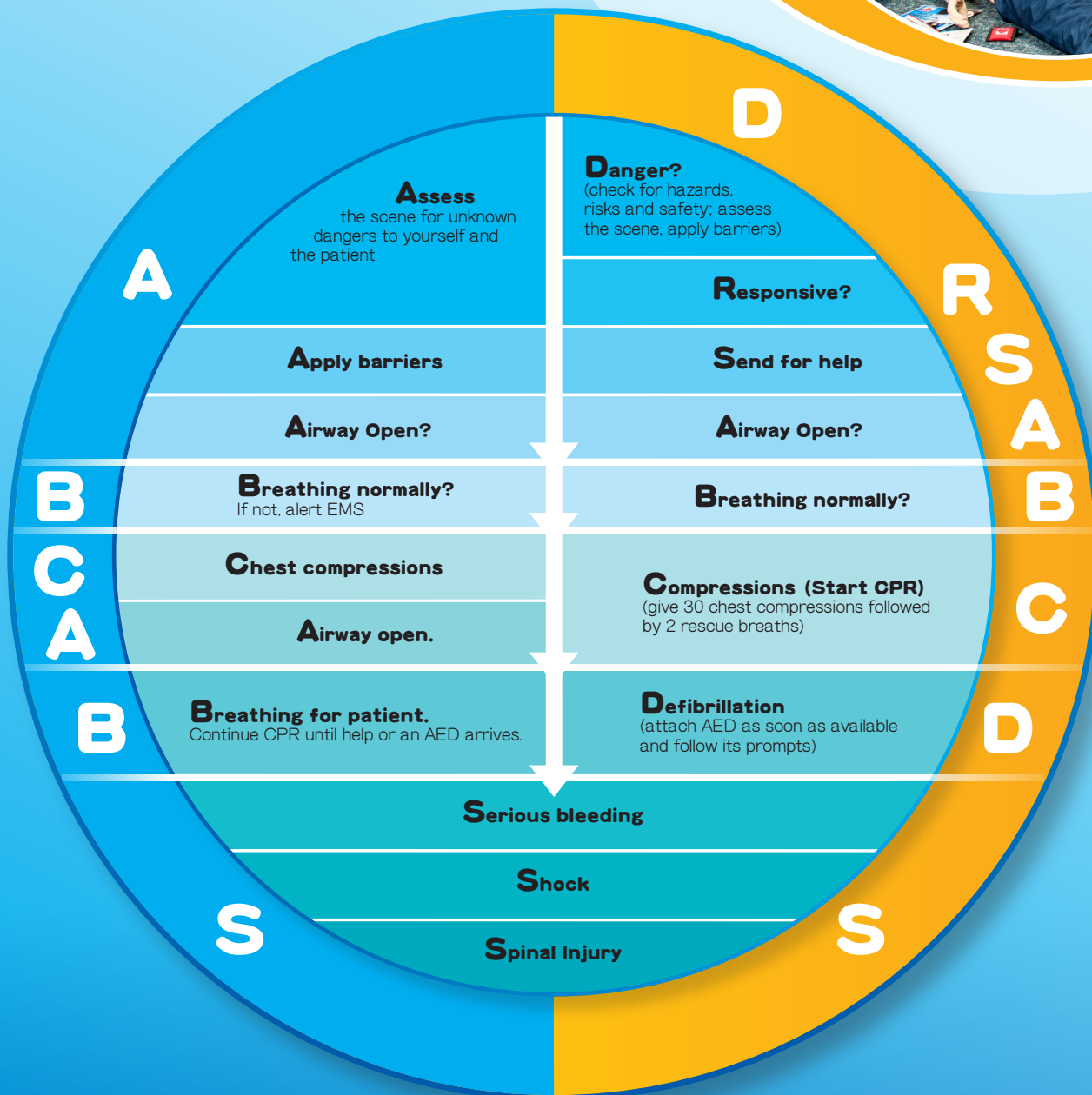




# CYCLE OF CARE



Creating Confidence to Care<sup>SM</sup>



During your Emergency First Response (EFR) and EFR First Aid at Work (FAW) course you will use different mnemonics in regards to the *Cycle of Care*. A mnemonic is a learning device or in this case a memory word that helps you remember a procedure or information. Even though the mnemonic is different for the EFR and FAW courses the pathway and priorities for emergency care remain the same. By learning this memory word, you'll know what to do first, second, third and so on when a person with a life-threatening illness or injury needs you. In the EFR *Primary and Secondary Care Participant Manual* and Video, students learn another memory device besides DRSABCD'S. The memory word used in this curriculum is AB-CABS. Both DRSABCD'S and AB-CABS memory devices follow the current ILCOR guidelines for proper CPR and first aid protocol. The Australian Resuscitation Council (ARC) recommends to help students focus on remembering DRSABCD. However, explain to students that they will be reading and hearing about AB-CABS.